



NEVER FORGET.

09.11.2001

MOTORCYCLISTS AGAINST STAYING HOME



September 2017

**Texas District
Chapter **M2**
Spring, Texas**

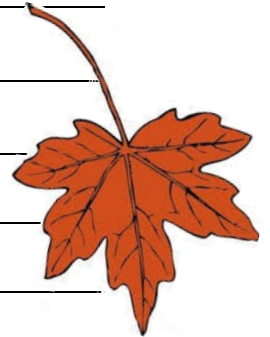
**Gold Wing Road Riders Association
Friends for Fun, Safety, and Knowledge
South Central Region H**





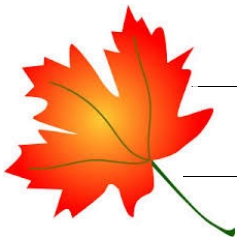
Table of Contents

Page 3	Director's Corner
Page 4	Upcoming Events
Page 5	House of Clues
Page 8	The Times They are a Changing
Page 12	Fall Foliage Ride
Page 13	M2 Team
Page 14	QBC
Page 15	Good Habits
Page 16	Chapter M2 Information, Texas District Chapter Information



Thanks To Our Sponsors

Page 13	Computer & Motorcycle Maintenance by Howard
Page 14	Bob Lunsford's Northwest Honda
Page 15	Central Business Marketing / Freedom Equity Group





Director's Corner

Bart & Cheryl Harris



Moving Forward at M2

Most of you have received an e-mail on Chapter M2's new Coordinator of the Month position that we will be implementing in January. If you did not receive the message or missed it, the main point is that the Coordinator of the Month (COM) will be responsible for acting as a ride/activity coordinator for all events in a given month (or finding a substitute if they cannot make an event). The idea is to not only take some load off the Chapter Director, but also bring in fresh ideas and energy into the activities.

We have a great chapter at M2. We emphasize the fun and try to do multiple social activities every month. We have a good Team who works hard every month to help plan and execute all the events. We all just want to have fun and we want to pick and choose what we do based on our schedule. Cheryl & I certainly understand and support this. The problem is, all of this does not just happen. It takes a little bit of planning and commitment. It is natural just to let others take care of it for the Chapter but it can get to be too much for any one family to do. We typically have a total of 4 to 5 organized events a month between the Chapter Gathering, Team Meeting and rides/events.

This is why we have come up with the Coordinator of the Month program. With good participation, any one family or individual should only need to function as COM once a year. We think this should be manageable for just about everyone and will help stimulate new ideas and keep the chapter healthy for many years to come.

Now, if you did not get the COM e-mail, do not get your feelings hurt. You are important and we care about you. We did not include you in the mailing as we realized that your work schedule or situation prevented you from functioning as a COM. We want to see you whenever your schedule permits and we would invite you when circumstances allow to help out by filling in for an absentee COM.

I hope everyone will support the COM program to keep Chapter M2 healthy and active for years to come.

PLAN AHEAD!:

- November 3rd - 4th, Region H Fall Ride-in, Van Buren to Marble Falls, Arkansas
- December 3rd - Chapter Christmas Party



The M * A * S * H Chapter

September Journeys

Sept 6th

Wednesday

Team Meeting at Red Lobster, The Woodlands

Eat at 6:30 p.m. / Meeting at 7:15 p.m.



Sept. 8th

Friday

M*A*S*H Chapter Gathering at IHOP, The Woodlands

Come early and visit, meeting at 7:15 p.m.



Sept. 10th

Sunday

Breakfast Ride to Montgomery Steakhouse

Meet at Stripes at 8:00 a.m.



Sept. 16th

Saturday

Ride to Truth BBQ in Brenham

Meet at Stripes at 9:00 a.m.



Sept. 30th

Saturday

Ride to Texas Star Café in Colmesneil

Meet at Chevron at 9:00 a.m.



Coming Up in October

Oct. 6th

Friday

M*A*S*H Chapter Gathering at IHOP, The Woodlands

Come early and visit, meeting at 7:15 p.m.

Oct. 7th

Saturday

Ride to Lufkin Zoo

Meet at Chevron at 9:00 a.m.

Oct. 11th

Wednesday

Team Meeting at Red Lobster, The Woodlands

Eat at 6:30 p.m. / Meeting at 7:15 p.m.

Oct 21st

Saturday

Ride to Topwater Grill in San Leon

Meet at Chevron at 9:00 a.m.

Oct. 29th

Sunday

Late Lunch ride to Farmhouse Café in Onalaska

Meet at Chevron at 12:00 p.m.



goodbye, august
hello, september



Wow, the House of Clues adventure was a popular event to beat the August heat! We had sixteen participants from Chapter M2 and thirteen from Chapter N2 for a total of twenty-nine people showing up at the House Clues location in Conroe. Superbly organized by Linda Gresak, the event went off without a hitch and everyone thoroughly enjoyed themselves..

We broke up into three groups by drawing names and each group was locked up in a different theme room with an hour to solve the clues and find the key to get out. One group was in the Glow in the Jungle Room, another in the Lost in Egypt Room and a third in the Mystery Room. There is also a fourth option, the Zombie Room which we chose not to use.

The Glow in the Jungle Room team was the first out solving the mystery in about 35 minutes. I understand this may have been the easiest of the three. The most challenging part of that room may have been working the locks. Of course we also had Scott Gresak, master game player, in that room which does not hurt. Rex West also solved the hardest clue making a big contribution to our freedom effort.

(Continued on page 6)



Success for the Glow in the Jungle Team!

*The M * A * S * H Chapter*

(Continued from page 5)

The Lost in Egypt team was second out finishing in just under an hour. They also reported some challenges with figuring out the locks once they solved a clue.



The Lost in Egypt Team Also Found Their Way Out

Our cover page group, the Mystery Room team, did not solve their clues and had to be let out. In fairness, the owner did advise that this was the most challenging room.

After our afternoon of detective work, it was time for some nourishment and off we went to Vernon's Kuntry Katfish for a nice meal where they had two big tables waiting for us.

This was a really great event a good way to spend a hot Saturday afternoon. Thanks goes to Linda for organizing the event.



The M * A * S * H Chapter



The Times They are a Changing

Bart Harris, Chapter Director

As many of you have probably heard by now, GWRRA is instituting a major restructuring to take effect in January 2018. The biggest change is the elimination of the Region Level of management such that the District will now report directly to National. The other big change is that they are putting Rider's Education responsibility at the District Level and replacing the Chapter Educator position with "Ride Coordinator".

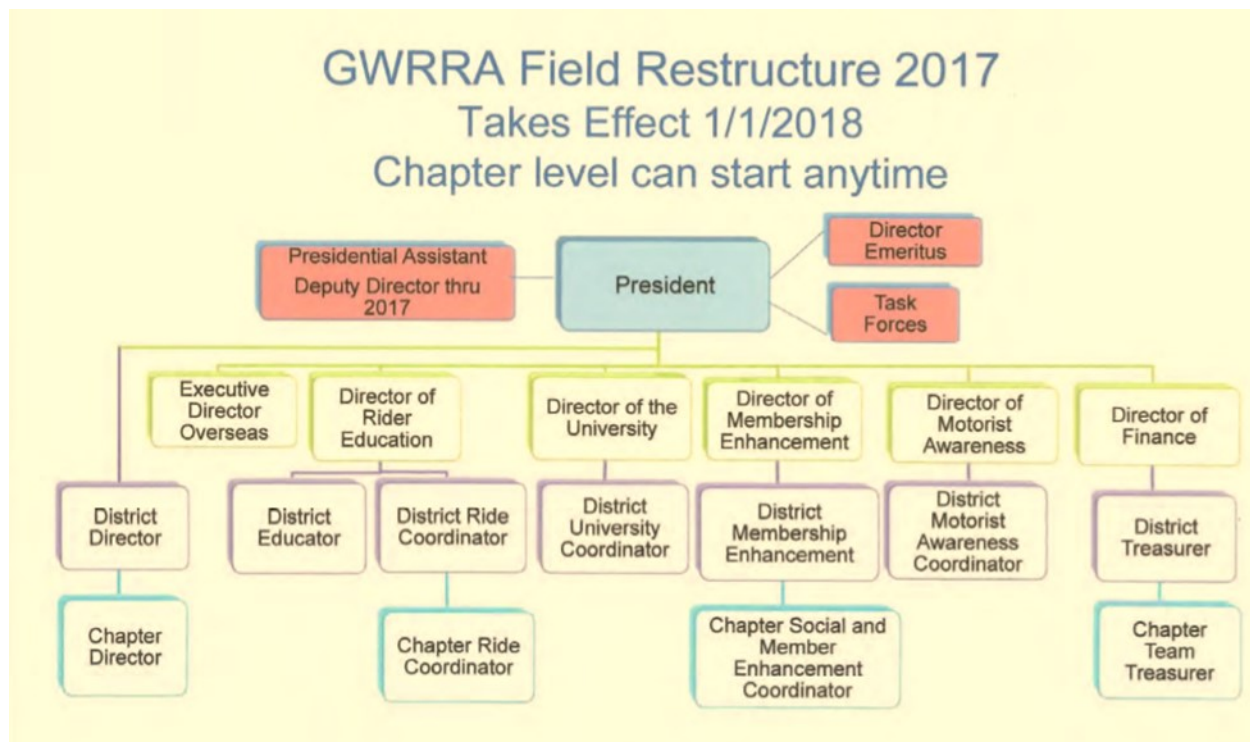
The intent of these changes is to streamline the organization, reduce burden on the chapters and emphasize the fun and social aspects of being an active participant in a chapter. Rider's Education is a fundamental tenant of GWRRA ("Friends for Fun, **Safety**, and Knowledge") so I know the emphasis on having fun safely will remain a major priority for all chapters. At this point, I am not quite sure what real changes we will notice at the day to day Chapter Level as a result of this. I do know that Rider's Education and the emphasis on safe riding will remain a major focus of M2 along with our emphasis on having fun!

We are also instituting some changes in the Chapter with the Coordinator of the Month role (see Director's Corner article) which is independent of this change. Similar positions, although not listed on GWRRA's organizational chart, have been successfully implemented at other chapters and we are certainly free to organize the chapter in a manner that works best for us.

The new organization chart published by National is provided below as well as excerpts from the communication posted by GWRRA. I have include only the summary of the reasons for the change and the explanation of changes at the chapter level herein. You can go to the following website address for the full article:

<http://gwrro.org/oconnect/documents/gwrro-organizational-restructure-why-change-7-15-17.pdf?v=2>

(Continued on page 9)



(Continued from page 8)

Why Change the GWRRA Structure?

July 2017

As we look forward to our next 40 years we needed to analyze our Association and it's needs. In doing so we've decided that a change is needed for us to meet our Membership's expectations, to streamline our communications and provide leadership appropriate to our Membership. In making these changes we focus on fun, social, riding, having less rules and providing united communications with our Members. The change needs to start from Home Office so Home Office is going to lead the way and we are getting this started right now. So I ask you now to follow my favorite saying from Gary Keller, "stay into curiosity and out of judgement". Thanks!



Our research has shown us that Regions are a hub for information but the words like "running a business" have crept into the responsibilities of a Region. We know that each Region has been doing it's very best for our Members and we appreciate their dedication. However, in keeping with this new direction that provides a streamlined approach of communication and leadership to our Membership, we have made a very difficult business decision. This is absolutely not personal as we value those Officers who take pride is what they do for our Members!! But with this new vision we see for our Association, we have made the tough business decision to eliminate the Region level of management on December 31, 2017. We will be laying out that path to wind down the Region and take care of the programs within each Region so no Member is left behind. **The key here is that nothing changes immediately, the change will happen on January 1, 2018!**

Our research has also shown that the Districts can be and should be the most responsive to the Chapters. We are going to change their scope of responsibilities so they can be more involved with the Chapters and the Members. All District Officers should be very involved with their Chapters in the District, keeping the fun, riding and social activities front and center.

We hear that Chapters are either struggling; struggling to find Officers; not doing enough fun things or not riding enough; OR we have heard that some may be focused a little too much on the business and not enough on the social and fun where a Chapter should be focused. We want all Chapters to "be fine" and to get back to the having fun, socializing and riding.

Our GWRRA Chapters are supposed to be a place of fun, sharing time with friends, our love of motorcycling and then going for a ride. Too many "rules" and "don't do that" have crept into our Chapters whether they are real or not. This must change.

The truth is, Chapters are where our Members share adventures, build friendships and create the memories that will hold them together for years to come. This is critical to this Association.

The changes we are making will simplify our Association and provide the atmosphere for having fun, enjoying each other and our bikes. Are we going to require the changes? In the elimination of the Regions we are. In the new responsibilities and focus of the District we will. But as we see it, if your

(Continued on page 10)

The M * A * S * H Chapter

(Continued from page 9)

Chapter is doing okay, we are not asking you to make any big changes. If you are struggling a bit, or you feel that you can be better than you are right now, then we want to help you get back on track and we believe that this new structure will help and of course, you just need to ask for help and we are there! We have adopted this new structure going forward for a new look to GWRRA and we look forward to our next 40 years and beyond. Thanks for your support! Now let's look at the new Officer roles for GWRRA.

Let's look at the new Chapter positions:

Chapter Director-

The name may be the same but the responsibilities have changed. The new role of the Chapter Director is more of a Coordinator of fun, activities, rides and more fun. To coordinate Chapter gatherings, that means you don't have to do them all. To suggest ideas to your staff/team and they can do it. We don't want you focused on your finances, just on fun and riding. You lead through facilitating your Team and your Chapter Participants into fun activities, making certain that any new Member is welcomed and made a part of this special place in GWRRA, their Chapter! Most importantly to this new role, you do not do it alone! A good resource for this new role can be found at <http://gwrro.org/oconnect/documents/a-new-approach-to-an-old-issue-complete.pdf> Oconnect is a great resource for all Officers.



My favorite expression is that a Chapter Director is a "Mama Duck" always gathering her ducklings together. We do it to gather and share time, fun and riding together.

Chapter Ride Coordinator-

As we change our focus we need to have someone coordinate our rides. We want this position will be under Rider Education so this person has to believe and participate in our Rider Education program and be at least a level 2, which is why they are an Officer of Rider Education. Their role will not be the same as the previous role of the Chapter Educator as we want you to focus your energy on planning all variety of rides that suit your Chapter Participants. As you get ready for that ride you will conduct a very informative Rider Meeting and you will encourage safety, i.e. T-Clocs, group riding techniques; safety clothes and more. You accept the Riders that show and they need to be in compliance with State law. You will encourage, communicate and lead the way sharing GWRRA's benefits of safety as developed through our Rider Education Program. You will not be focused on paperwork but on the opportunities to for the ride is your piece of the fun equation.

Chapter Member Enhancement and Social Coordinator -

As the name implies, this Member will be the Chapter social coordinator. Planning fun events and reaching out to the Ride Coordinator from time to time to incorporate a fun ride with some fun social events. Encourage your Chapter to participate in some of the fun programs that GWRRA has to offer. Reach out to those prospect and new Members faithfully every month until you talk with them and invite them to join you. You are the key to Chapter fun, enjoy it! You are GWRRA's vital communicator to those who are Members of GWRRA, share your passion!

(Continued on page 11)

(Continued from page 10)

Chapter Treasurer-

We will still have some finances that will need to be handled and the Chapter Treasurer is the person to do it. They know how much money they will need in a month and/or year, and they will report how the treasury is doing monthly at the Business or Staff Meeting. If someone wants or needs to do a specific fundraiser, they will coordinate that with the Chapter Director and Treasurer.

NOTE: Chapter finances are needed for a Charter fee; web hosting; some newsletters and Member appreciation. That means a major fundraiser may not be necessary. Focus on socials and rides and do 50/25/25's to pay for your necessary expenses. We're changing the focus to camaraderie, riding, fun and social and the finances just need to support what we have to do.

What Happens to Rider Education?

Great question. We will cover it more as we discuss the positions in the District, but the primary responsibility for the Rider Education Program will happen at the District level. The District will encourage the Chapter Rider Coordinator keeping them up to date and aware of the goings on with the Rider Education Program and assist as needed to meet the needs of the Chapter. As you read the District Structure you'll understand their new role as well.



Wing Ding 2017

GWRRA Region H




**Fall
Ride-in
Van Buren to
Marble Falls
Arkansas
November
3rd-4th
2017**

► **Friends
Riding the
Ozarks**

Don't Miss this!

► **Best Western
Van Buren, AR**



November 3rd

The Best Western in Van Buren has agreed to being our host hotel and have given us a \$69.95 nightly rate if you mention GWRRA Region H when making your reservations. We suggest that you book early as there are only 54 rooms in this hotel.


There is also a Hampton Inn next door but the rate there is \$92 + tax a night. The telephone is (479)471-7447.

Come in early and explore the historic downtown overlooking the Arkansas River. There are a lot of things to do and see in Van Buren.

Best Western
1903 North 6th Street
Van Buren, Arkansas 72956
(479)474-8100


**The Hub Motorcycle
Resort (800) 597-9963
November 4th**

Again, this year Debby and Randal are rolling out the red carpet to host Saturday night's dinner and bon fire (weather permitting). We have the main ball room and all 54 rooms of the resort available on a first come first served basis. Room rates are also \$60 a night this year. Mention GWRRA Region H when making your reservations. Also don't forget to order your Prime Rib when making your reservation too. That's the only way to get one.



Arkansas & Missouri RR

Some have already made plans to come in on Thursday, November 2nd in order to take the train excursion from Van Buren to Winslow and back. The train leaves at 11am on Friday and lasts for about 3 hours. Prices vary from \$50 to \$94 per person, depending upon which car you choose to ride in and whether or not you choose to have a boxed lunch. For more details on the train, go to www.vanburen.org/attractions/ride-the-train



Van Buren Historic District

Van Buren's Main Street is six blocks of beautifully restored buildings from the late 1800s and early 1900s that are listed on the National Register of Historic Places and make up the Main Street National Historic District. These buildings are home to unique shops, boutiques, salons, galleries and restaurants.

Gracing Main Street for well over a hundred years, the beautifully-



restored King Opera House sets the stage with its vibrant theatrical offerings and whispers the presence of a once earnest and intrepid actor, now haunting the backstage and still looking for work.

Van Buren's Public Square presents its Italian-inspired county courthouse and rugged one-room school house in the midst of a gracefully landscaped garden setting.



Riding the Ozarks

We have routes prepared for a full day's ride on some of the prettiest motorcycle highways in the country. The fall foliage should be in full swing this year since we are a little later in the year. No Interstates, only honest to goodness twisties fit for your motorcycling pleasure. Bring your group or join one that is here. Either way, it's sure to be a fun time with friends before winter sets in. Take our route or plan your own to join us at the Hub in Marble Falls for a fun filled evening with a delicious meal together.

**Door
Prizes!**




50/50's

S'mores



**Friday and Saturday
nights.**

GWRRA Region H

Jim and Reba Berry
Region H Directors
director@gunna-h.org

Tim and Becky Dinnel
Assistant Directors
Membership Enhancement Officers
med@gwrro-h.org

Shane and Billie Fleming
Events Coordinators
bfleming5000@yahoo.com
852 630-2295

The M*A*S*H Chapter Team



OFFICERS

Chapter Directors (CD)	Bart Harris Cheryl Harris	cd@themashchapter.com	281 814 2051 281 814 2049
Chapter Educators (CE)	Tim & Kathy Bryan	educator@themashchapter.com	903 721 0941
Chapter Treasurer (CT)	Andy Woodard	treasurer@themashchapter.com	281 802 2915
Chapter Membership Enhancement (CME)	Linda Gresak Scott Gresak	membership@themashchapter.com swgresak@yahoo.com	281 813 9991 281 386 7800
Activities Coordinator	Kim & David Lamb	events@themashchapter.com	832 298 7281
Chapter Coordinators	Debbie Grieger Britt Grieger	gwtriker@ymail.com	713 775 8972 713 775 8973
Newsletter Coordinator	Kathy Bryan	newsletter@themashchapter.com	903 284 1418
Correspondence Secretary	Claudia Woodard	twonutsonawing@att.net	281 288 9119
Webmaster	Tim Bryan	webmaster@themashchapter.com	903 721 0941
Couple of the Year - 2017	Andy Woodard Claudia Woodard	twonutsonawing@att.net	281 802 2915 281 288 9119
Communications Coordinator	Cheryl Harris	communications@themashchapter.com	281 814 2049



Computer Maintenance by HOWARD



Telephone: Home (881) 820-3450 Call (881) 787-9947
E-mail: hhalasz@sbcglobal.net
Specializing in Windows PC Repair and Upgrades

Motorcycle Maintenance by HOWARD



Telephone: Home (881) 820-3450 Call (881) 787-9947
E-mail: hhalasz@sbcglobal.net
Specializing in Honda Gold Wing repair and maintenance



September Birthdays

3 rd	Audrey Miller
21 st	Collen Campbell
29 th	Joanna McFadden



Quote by Claudia

"Leadership is the art of getting people to do what they don't want to do and like it."

Harry Truman

September Anniversaries

6 th	Bart & Cheryl Harris
14 th	Marty & Donna Uphoff



Bob Lunsford's

Northwest Honda

Come ride with us.

Your One Stop Honda Shop.

Sales (281) 447-3476

Parts & Accessories (281) 447-6337

Service (281) 447-0316

10102 North Freeway, I-45 At West Road



Always wear a helmet, eye protection, and protective clothing and respect the environment. Obey the law and read your owners manual thoroughly. For rider information call the Motorcycle Safety Foundation at 1-800-446-9227

Good Habits

The following is a synopsis of an article by Walt Fulton entitled “Habits of Successful Motorcyclists” published in the September edition of *Motorcycle Consumer News*.

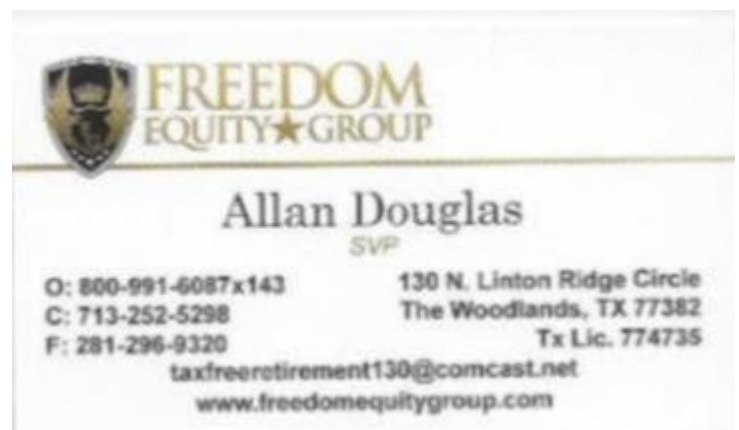
Mr. Fulton advises that successful, experienced motorcyclists that ride smoothly and safely are those that choose consistency over spur-of-the-moment actions when they are riding. Good habits are the result of consistency, which prevents surprises, and helps make proper actions in emergencies second nature.

The first step to being consistent is the pre-ride check (T-Clock checks). Do you check your tire pressures every time you ride? I do. It is not unusual for my tires to go down 1 to 2 psi every week. Motorcycle tires have relatively low volumes so a small loss of air will result in a significant change in pressure. Mr. Fulton also suggested a post ride check to make sure nothing had gone wrong during your ride. I had not heard this before but sounds like a good idea – give you time to address the issue before your next ride rather than scrambling to fix the problem or compromise your safety on the next ride.

The next major point raised is “situational awareness”. Being aware of one’s surroundings and identifying threats. The author suggested to think of situational awareness as your radar – always on and searching for any hazard: front, sides and rear. If you remember your BRC and ERC courses, you know that scanning in front and behind is a major emphasis in these classes. Situational awareness also means being aware of road conditions and identifying changes ahead in road conditions that might affect your stability.

Another habit that leads to successful riding is visual control. If you are making multiple corrections on curves, you are likely not exercising good visual control. As we have all had it beat into our heads, you go where you look. If you are not looking through the corner at where you want to go as opposed to where you do not, bad things happen. I know even after all these years, I still have to consciously remind myself to look thru corners rather than look at the edge of the road.

Finally, a successful rider is a smooth operator. Smooth use of the throttle, clutch and brakes helps control the motorcycle keeping the suspension, tires and chassis working in unison and keep things under control. Smooth acceleration and deceleration with the throttle, gradual engagement and release of the clutch result in less “jerkiness” and safer operation of the motorcycle. Braking is of course the most important control. Gradual application followed by progressive application of the front and rear brakes results in the shortest stopping distance without losing control.



The M * A * S * H Chapter

**Come have some fun with your friends and neighbors,
Join us on a ride or at our Monthly Chapter Gathering**



*Traveling around Texas?
Pay a visit to some of our
friends.*

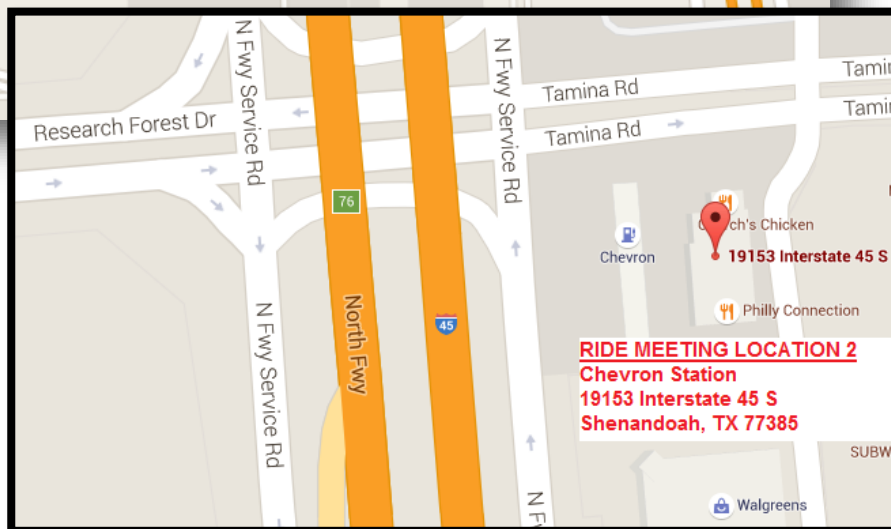
*Go to the Texas District Website for
links to other GWRRA local
chapters:*

[http://www.gwr-ra-tx.org/chapters/
chapters.php](http://www.gwr-ra-tx.org/chapters/chapters.php)

HELLO!



MEET THE TEAM



WELCOME

